

Synchronized Video

General Description

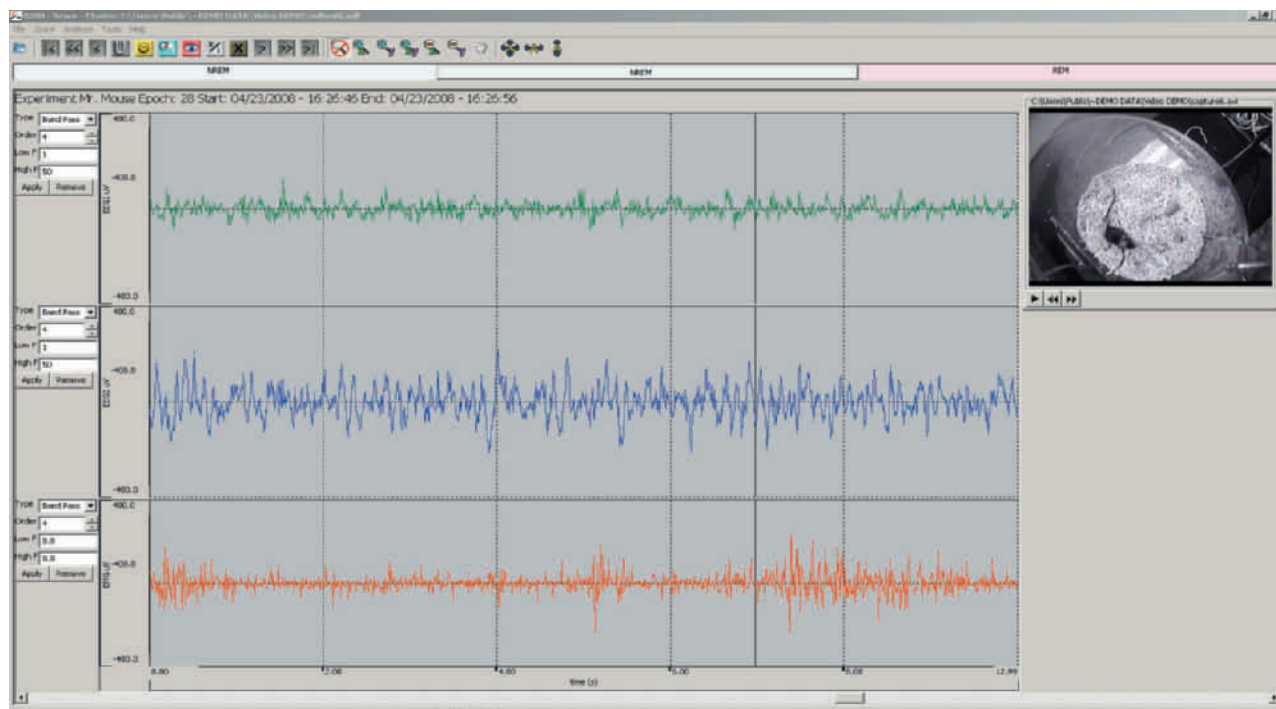
The Pinnacle Video capture module is designed to add digital video recording and playback functionality to any Pinnacle 8200 or 8400 hardware device. Mounted above the cage on our standard plates, a Sony color camera captures 640 X 480 pixels of full-motion video at 30 frames per second. Recording can also be accomplished in conditions of complete darkness using the automatic, built-in infrared illumination.

Video Capture

The video recording software module works seamlessly with existing Pinnacle collection software and can be used in both mouse and rat systems. Captured video is displayed live on-screen in conjunction with EEG or biosensor data as it is streamed from the animal. Recording length is limited only by storage capacity (approx 10 GB/animal/day). Long recording sessions can be automatically split into smaller files for simplified data transfer and archival.

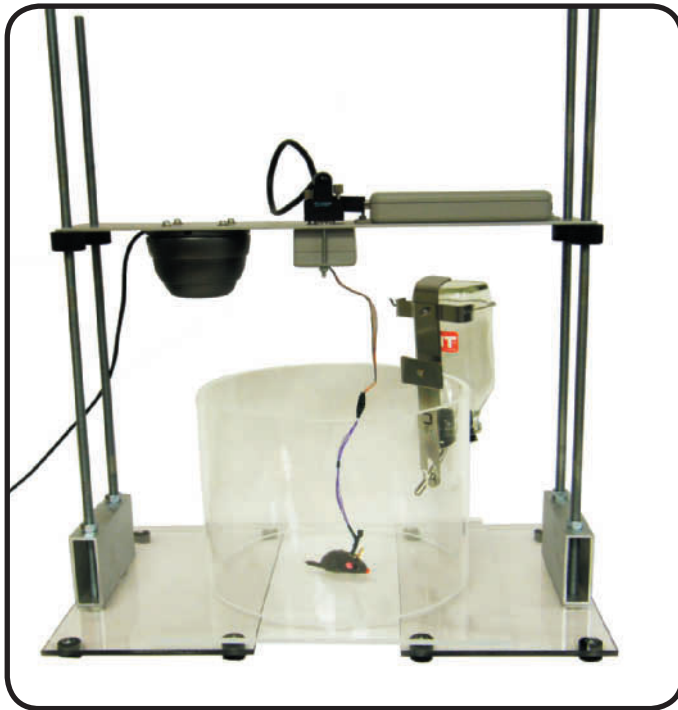
Video Playback

Easy synchronization with Pinnacle review software allows recorded EEG waveforms or biosensor activity to be analyzed along with an accurate visual representation of animal activity during data collection. Video playback is supported under both PAL-8200 Score and PAL-8400 Acquisition/Review software. All video is recorded using DIVX format so captured footage can be played back with most video software supporting the free DIVX codec.



PINNACLE
TECHNOLOGY INC.

2721 Oregon Street
Lawrence, KS 66046



Basic Recording Package

Video capture can be ordered as an accessory to new systems or easily integrated with existing Pinnacle acquisition systems. The video system includes software, camera and a pre-configured Dell computer with sufficient hard disk storage for 30 days of continuous recording. A second recording camera can be added to the same computer for minimal expense. Camera mountings on our standard metal plate allow for placement above the cage however, individual cameras can be easily removed to record from any angle.

8236 Video System

(Includes: computer, software, and IR camera)

8237 Second Camera Setup



Above Left: Day time still of rat



Above Right: Night time still of rat using IR Illumination

Advantages

- Compatible with Pinnacle's 8200 or 8400 series
- Monitor and record seizure and sleep episodes
- Record in darkness using built in IR illumination
- Record from any angle
- Second camera can be added at minimal expense
- Synchronization with Pinnacle Review Software enables correlation of EEG waveforms or biosensor activity with accurate visual representations of animal activity
- Automatic file size management for easy archival
- Unrestricted video playback

